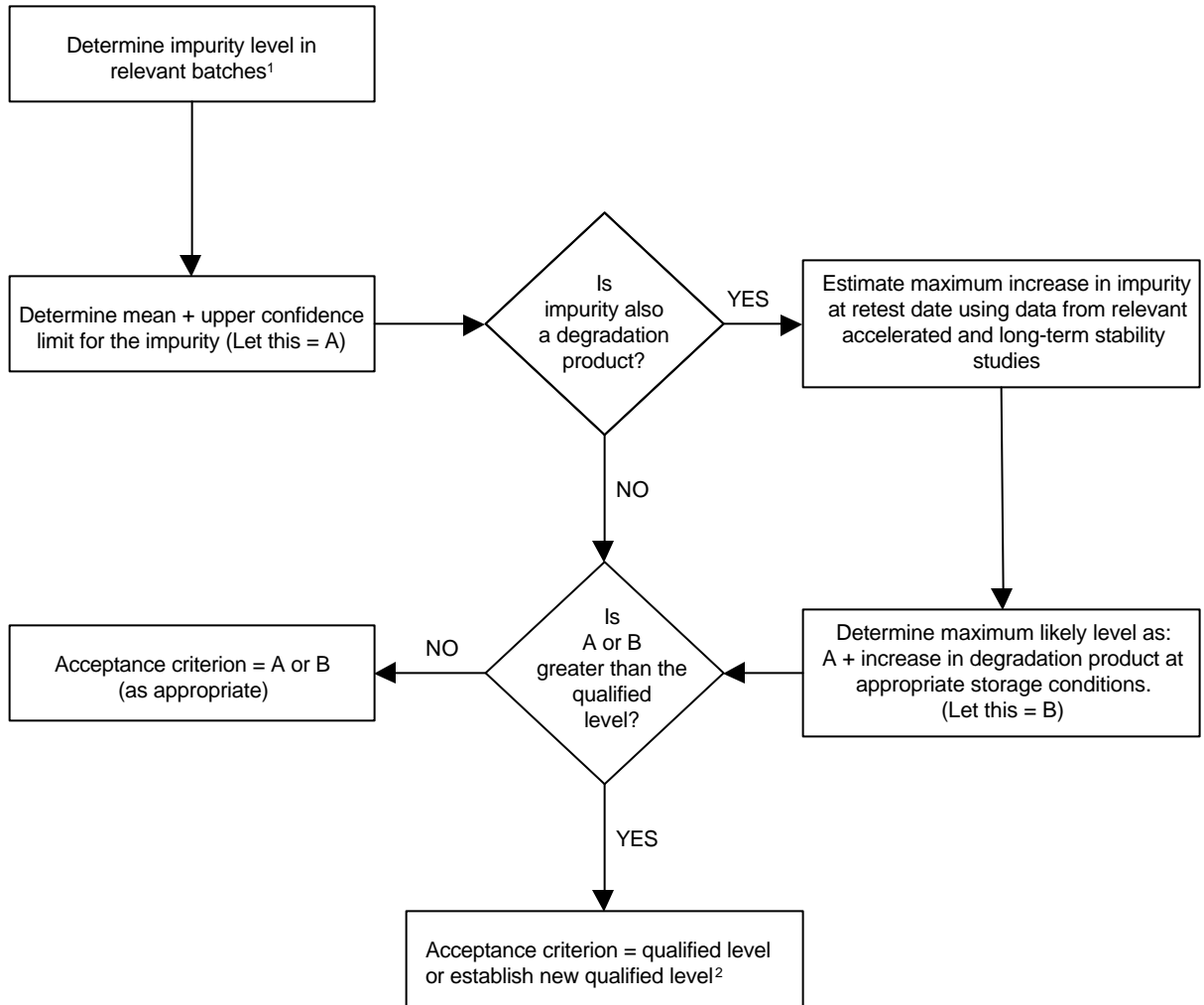


DECISION TREE #1: ESTABLISHING ACCEPTANCE CRITERION
FOR A SPECIFIED IMPURITY IN A NEW DRUG SUBSTANCE

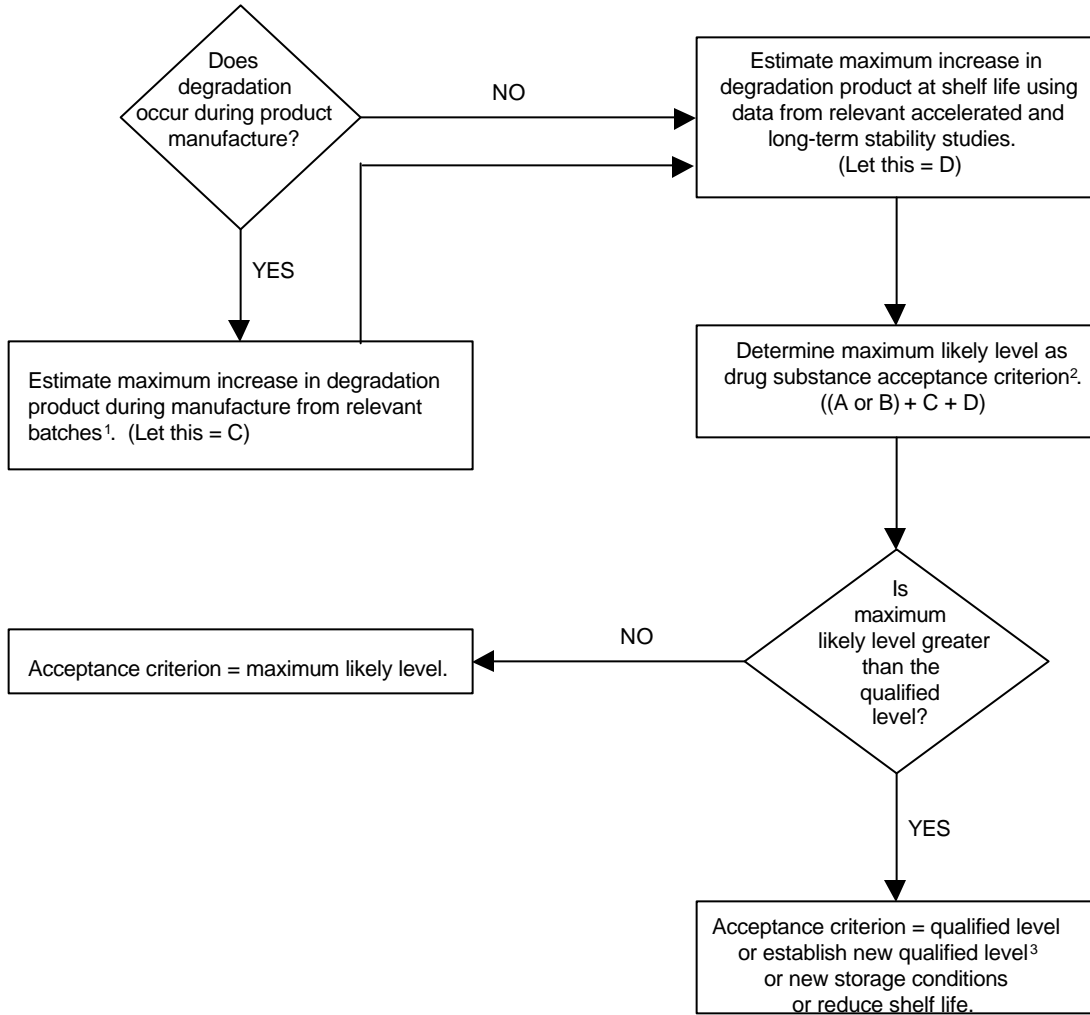


¹ Relevant batches are those from development, pilot and scale-up studies.

² Refer to ICH Guideline on Impurities in New Drug Substances

Definition: upper confidence limit = three times the standard deviation of batch analysis data

DECISION TREE #2: ESTABLISHING ACCEPTANCE CRITERION FOR A DEGRADATION PRODUCT IN A NEW DRUG PRODUCT

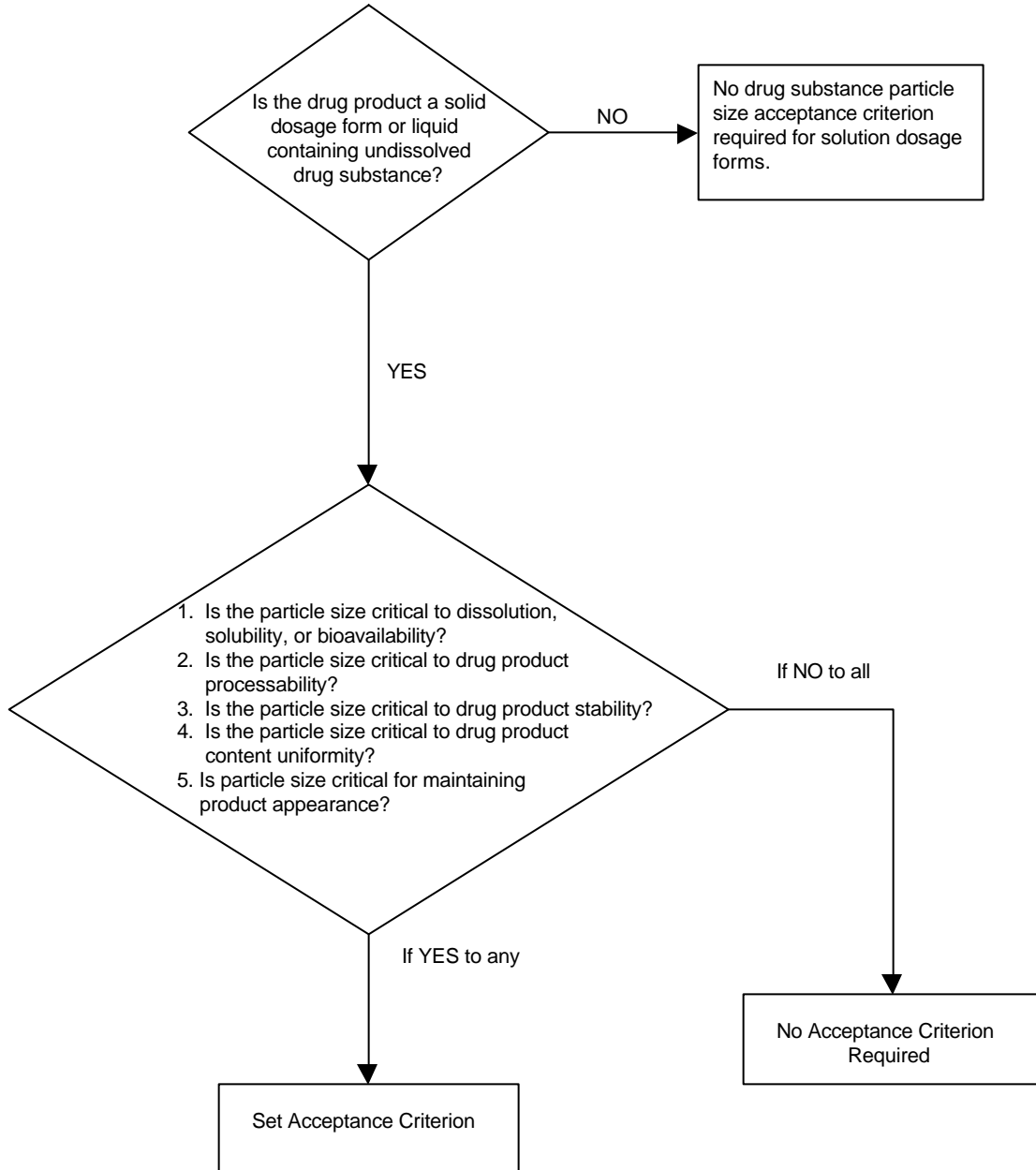


¹ Relevant batches are those from development, pilot and scale-up studies.

² Refer to Decision Tree 1 for information regarding A and B.

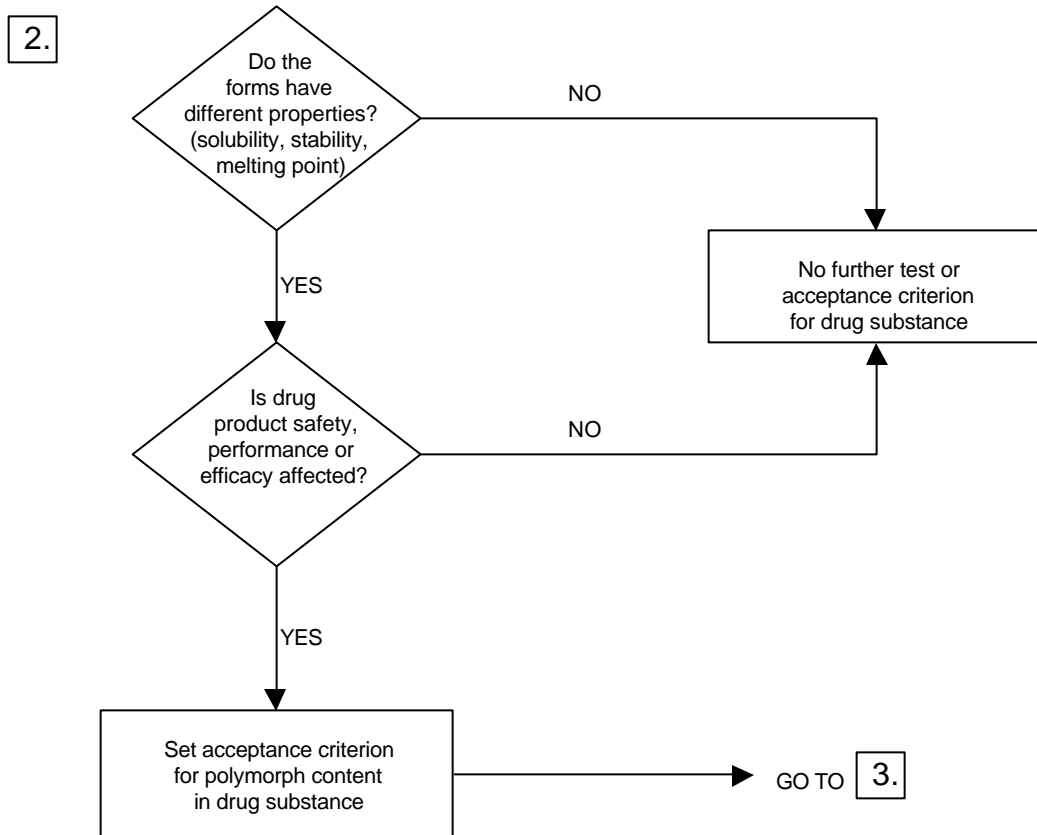
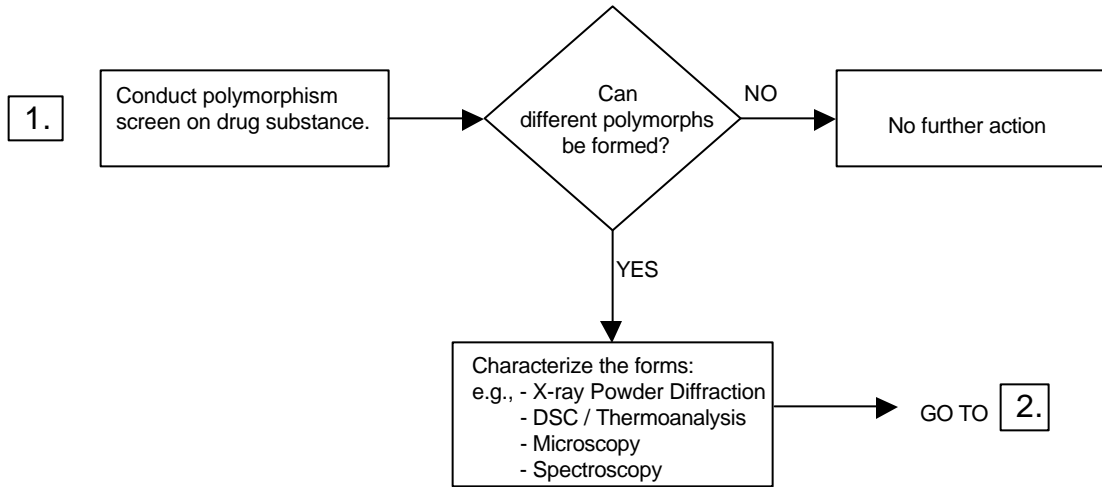
³ Refer to ICH Guideline on Impurities in New Drug Products.

DECISION TREE #3: SETTING ACCEPTANCE CRITERIA FOR
DRUG SUBSTANCE PARTICLE SIZE DISTRIBUTION



DECISION TREE #4: INVESTIGATING THE NEED TO SET
ACCEPTANCE CRITERIA FOR POLYMORPHISM
IN DRUG SUBSTANCES AND DRUG PRODUCTS

Drug Substance

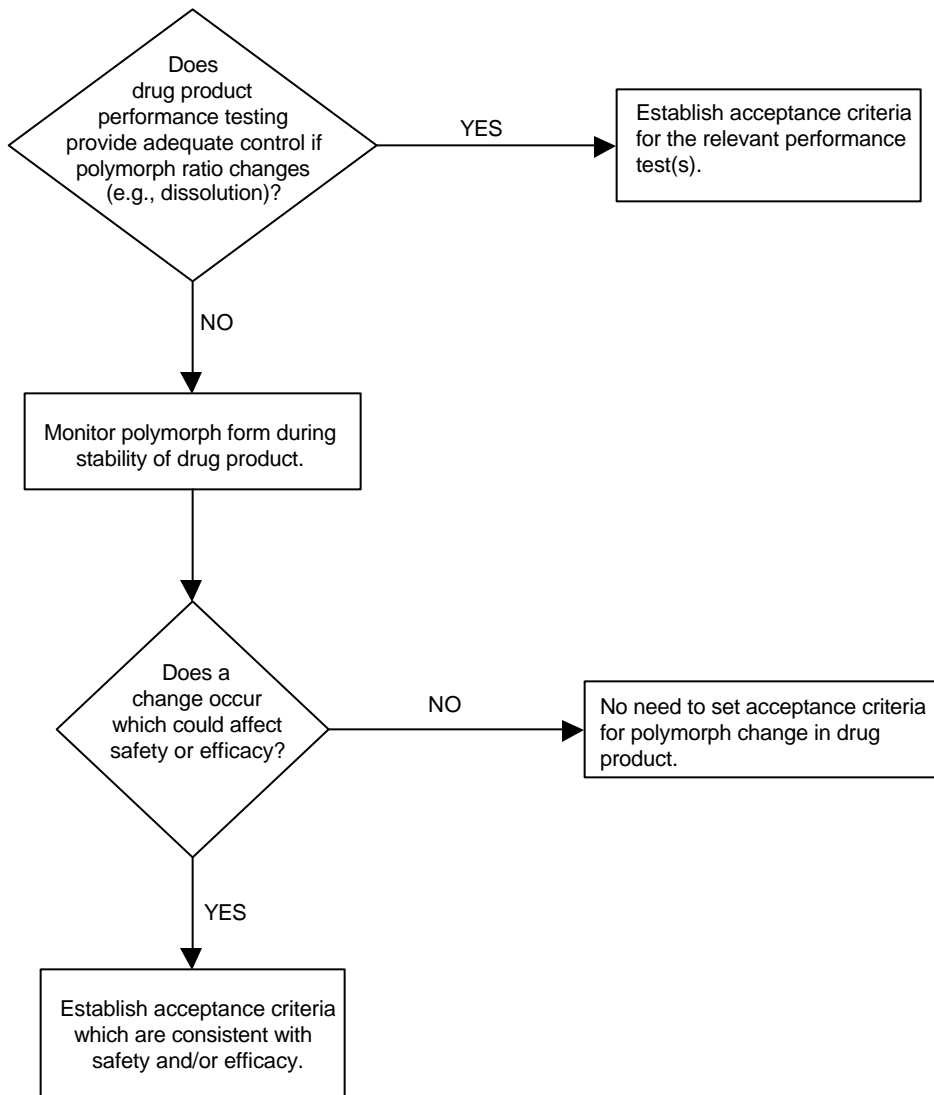


DECISION TREE #4: INVESTIGATING THE NEED TO SET
ACCEPTANCE CRITERIA FOR POLYMORPHISM
IN DRUG SUBSTANCES AND DRUG PRODUCTS

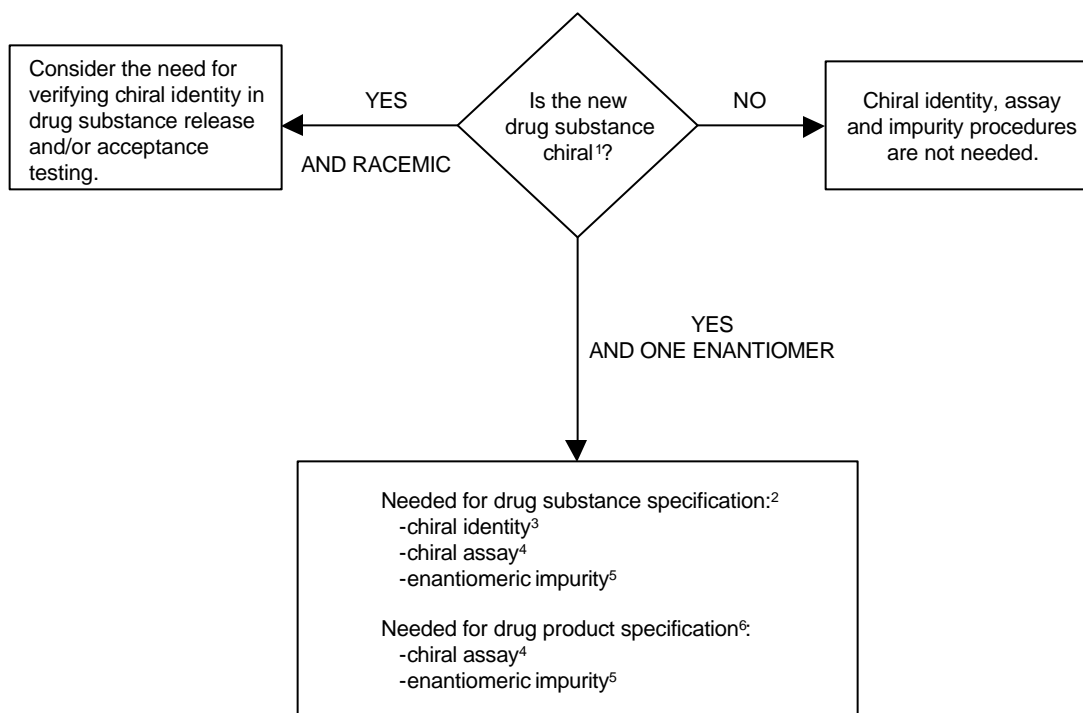
Drug Product - Solid Dosage Form or Liquid Containing Undissolved Drug Substance

N.B.: Undertake the following processes only if technically possible
to measure polymorph content in the drug product.

3.



**DECISION TREE #5: ESTABLISHING IDENTITY, ASSAY
AND ENANTIOMERIC IMPURITY PROCEDURES FOR CHIRAL
NEW DRUG SUBSTANCES AND NEW DRUG PRODUCTS
CONTAINING CHIRAL DRUG SUBSTANCES**



¹ Chiral substances of natural origin are not addressed in this Guideline.

² As with other impurities arising in and from raw materials used in drug substance synthesis, control of chiral quality could be established alternatively by applying limits to appropriate starting materials or intermediates when justified from developmental studies. This essentially will be the case when there are multiple chiral centers (e.g., three or more), or when control at a step prior to production of the final drug substance is desirable.

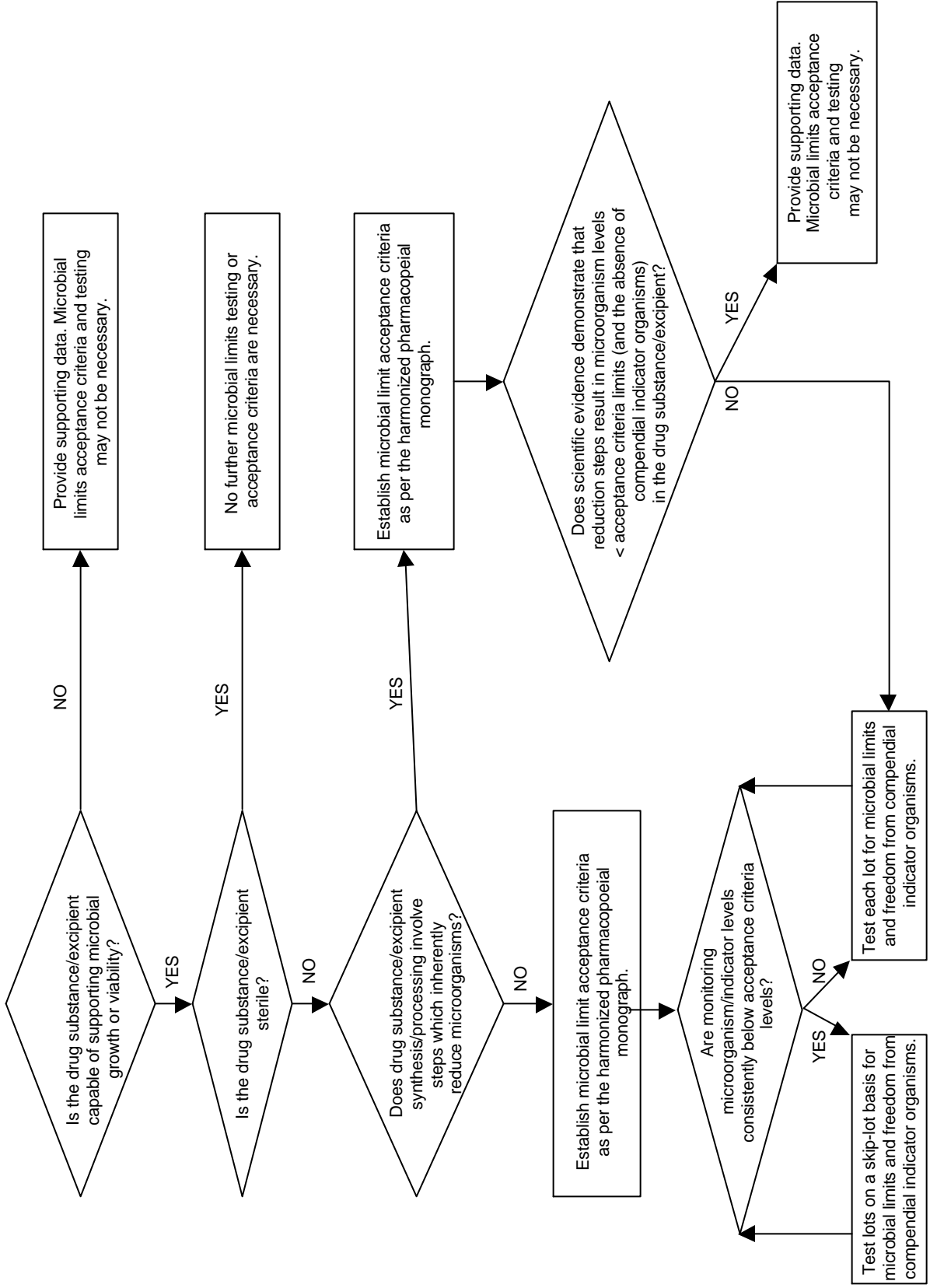
³ A chiral assay or an enantiomeric impurity procedure may be acceptable in lieu of a chiral identity procedure.

⁴ An achiral assay combined with a method for controlling the opposite enantiomer is acceptable in lieu of a chiral assay.

⁵ The level of the opposite enantiomer of the drug substance may be derived from chiral assay data or from a separate procedure.

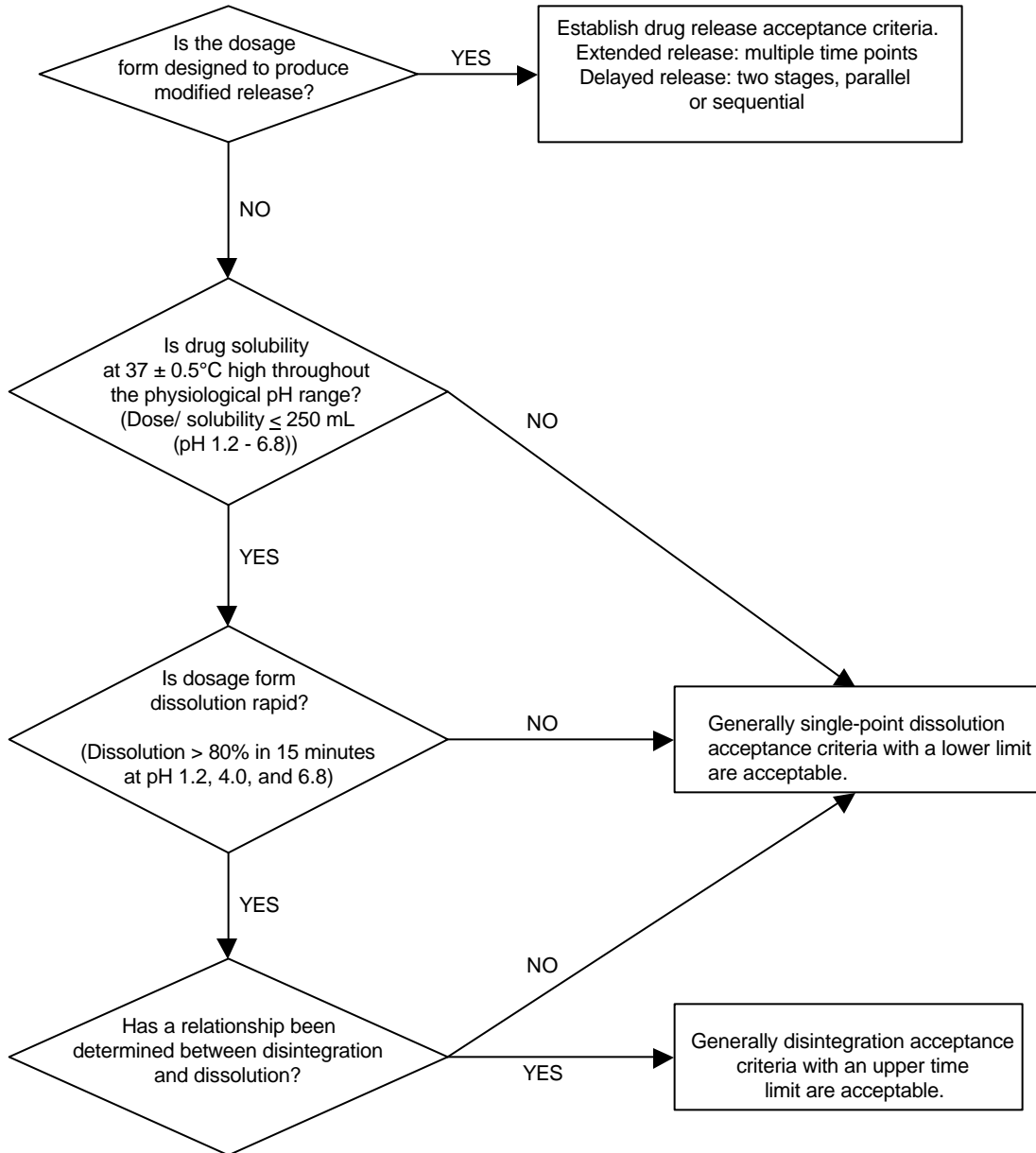
⁶ Stereospecific testing of drug product may not be necessary if racemization has been demonstrated to be insignificant during drug product manufacture and during storage of the finished dosage form.

DECISION TREE #6: MICROBIOLOGICAL QUALITY ATTRIBUTES OF DRUG SUBSTANCE AND EXCIPIENTS



DECISION TREES #7: SETTING ACCEPTANCE CRITERIA
FOR DRUG PRODUCT DISSOLUTION

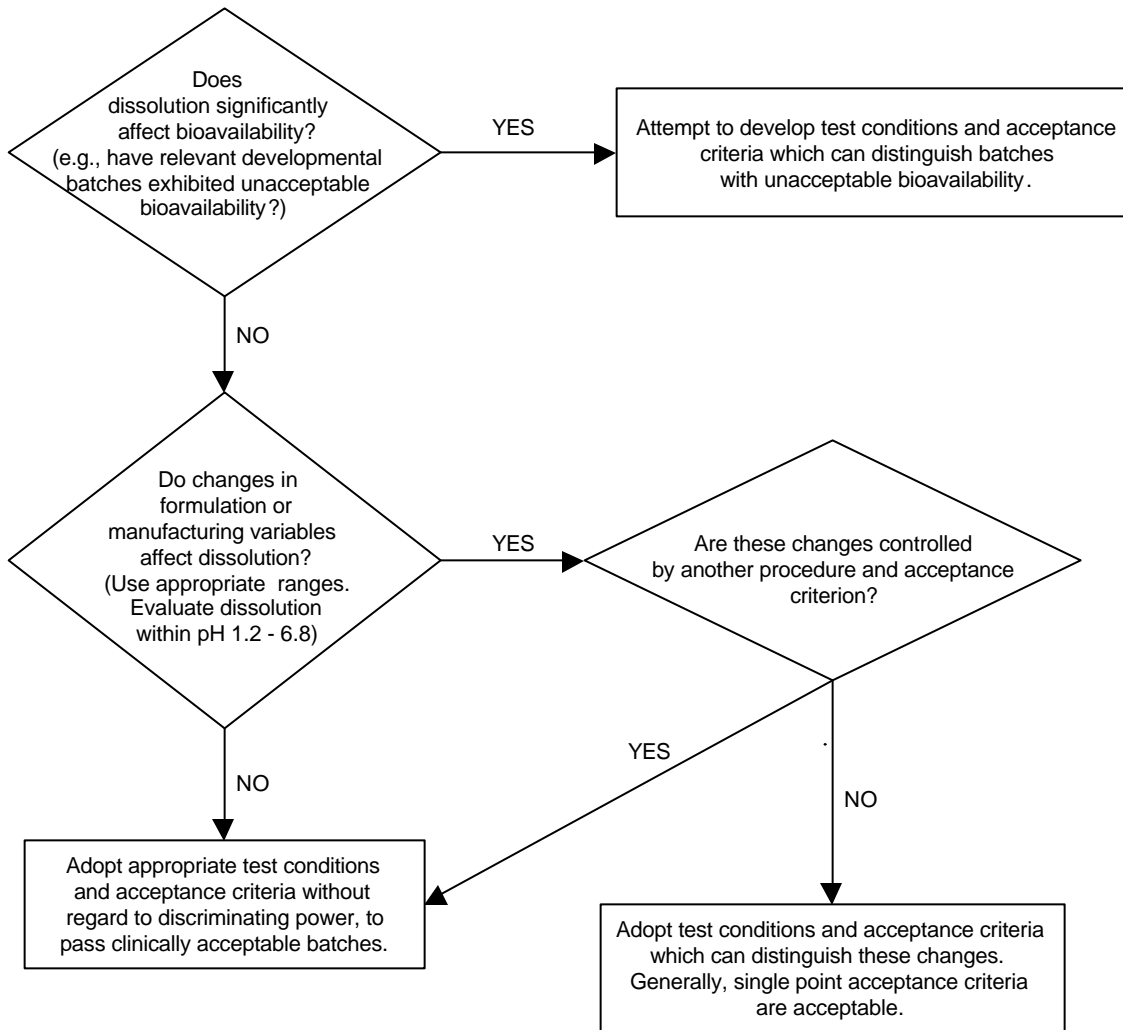
1. What type of drug release acceptance criteria are appropriate?



Continued on next page.

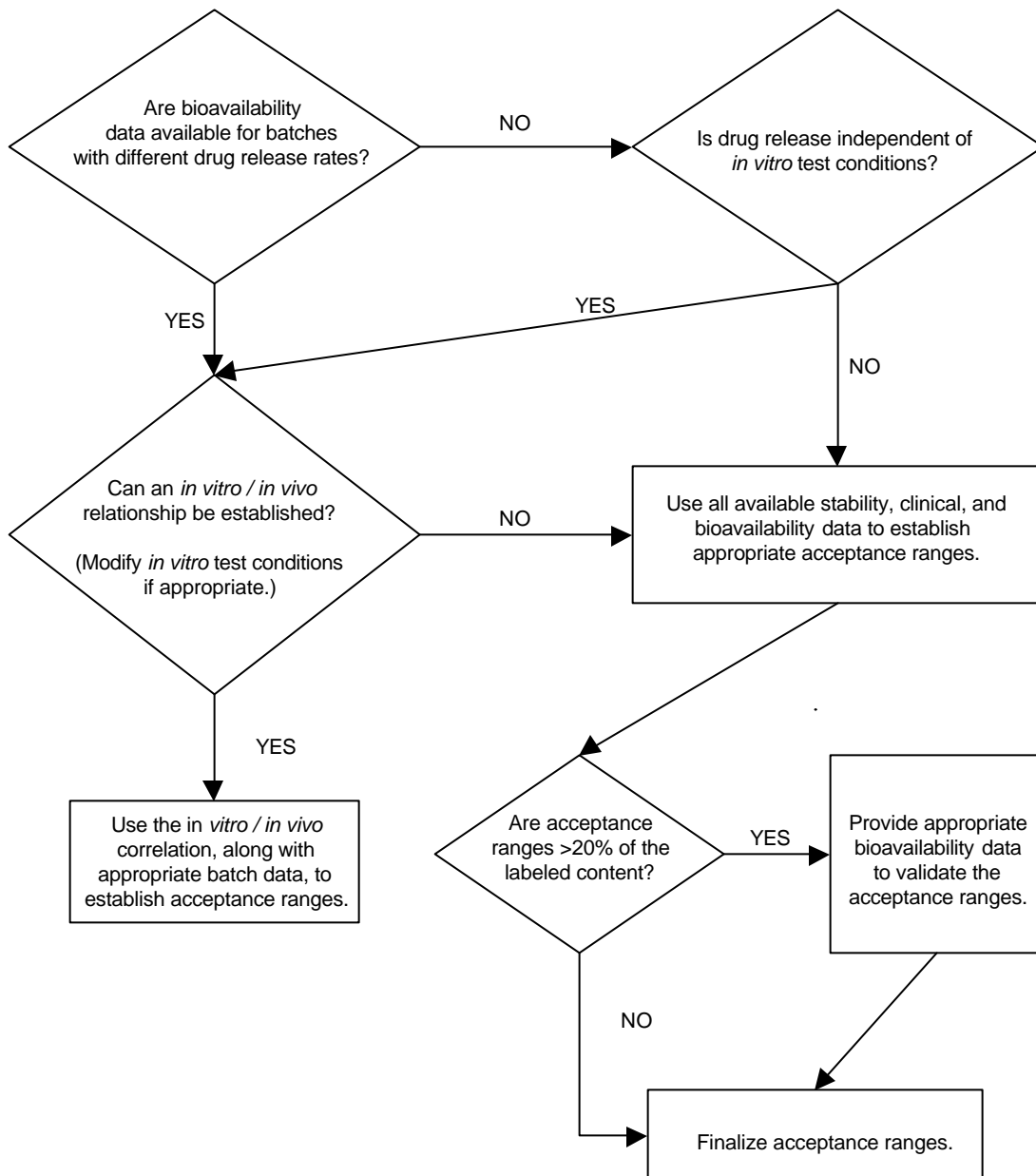
DECISION TREES #7: SETTING ACCEPTANCE CRITERIA
FOR DRUG PRODUCT DISSOLUTION

2. What specific test conditions and acceptance criteria are appropriate? [immediate release]



DECISION TREES #7: SETTING
ACCEPTANCE CRITERIA
FOR DRUG PRODUCT DISSOLUTION

3. What are appropriate acceptance ranges? [extended release]



DECISION TREE #8: MICROBIOLOGICAL ATTRIBUTES OF NON-STERILE DRUG PRODUCTS

